






Magnificent classical home located in the sought after Redhill Road enclosure  5  5.5  3

Located in the sought after Redhill Road enclosure in the heart of Morningside, this magnificent classical home was designed for a sumptuous life style. The splendid entrance opens into a large double volume entrance hall, which in turn leads to five spacious reception rooms, viz. a lounge, dining room, family room, cocktail bar and billiard / cinema room, which all open either onto the garden or the double entertainers patio which has been fitted for outdoor entertainment and overlooks the feature pool. The home is set in a tranquil landscaped garden with mature trees. Two boreholes and three 5000 litre Jojo tanks feed the irrigation system and supply the home when required. There is a filtration system for the home. A gourmet eat in kitchen with scullery and laundry and opens onto an outside dining terrace. Upstairs hosts 5 en-suite bedrooms. The luxurious main bedroom has a lounge area, a large dressing room and a bathroom with a steam shower. 4 of the bedrooms open onto...

Features

Interior

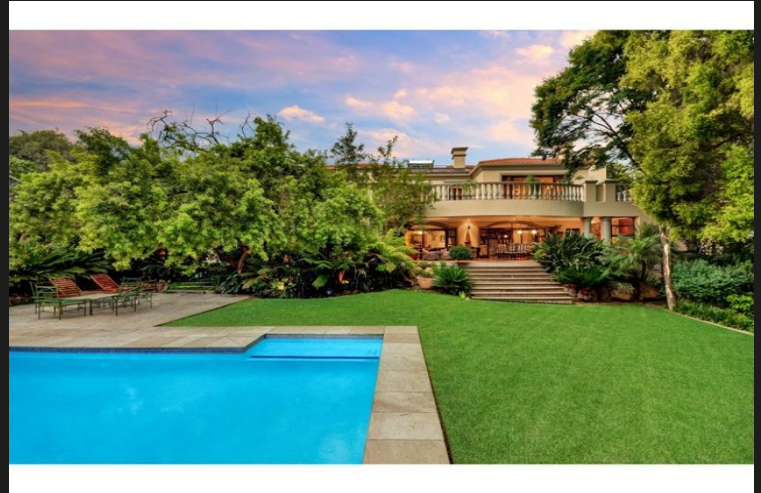
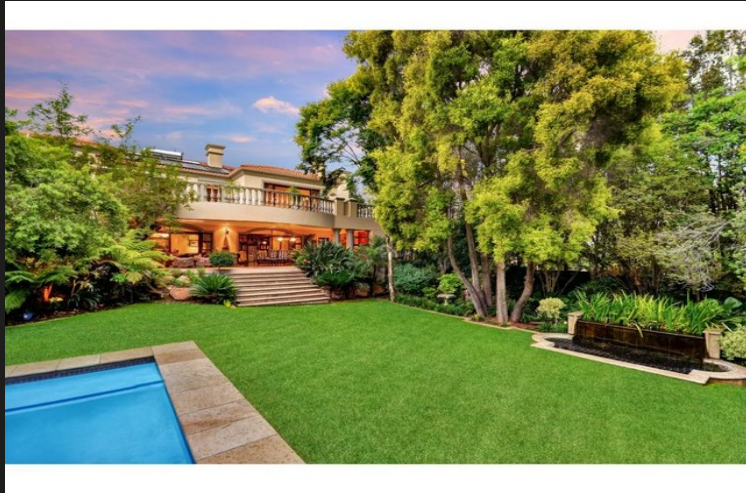
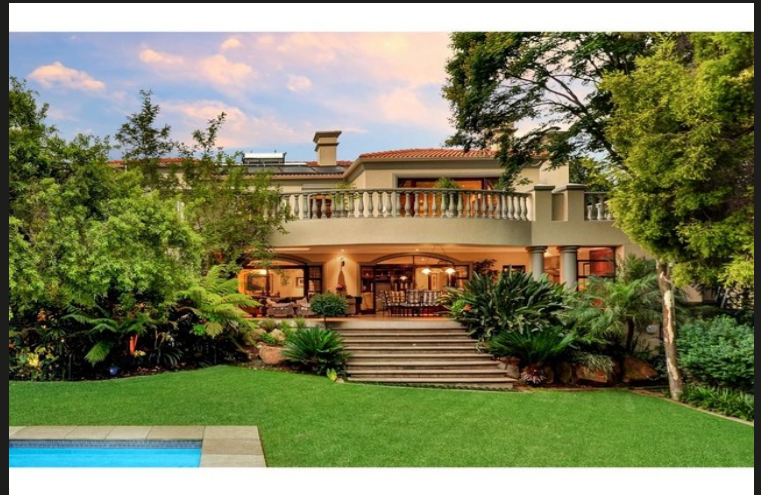
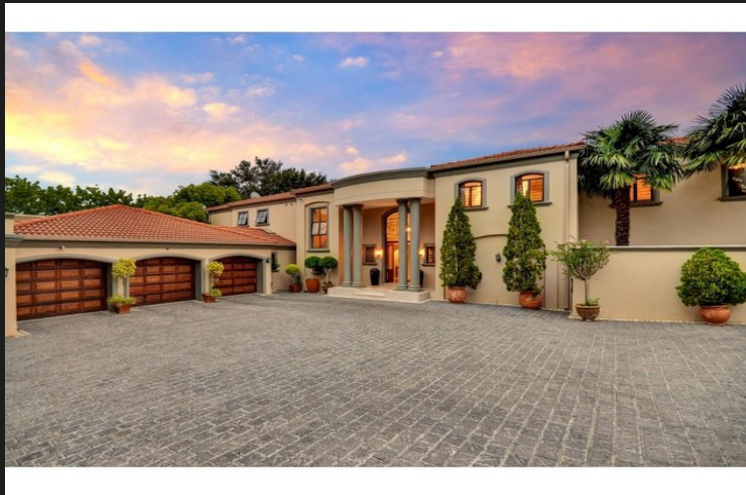
Bedrooms 5
Kitchens 1
Studies 1

Exterior

Garages 3
Security Yes
Views False
Domestic Accom. 2
Pool Yes

Sizes

Internal 1000m²
External 2400m²



Morningside at a glance

Morningside Morningside is one of the most conveniently located suburbs in Northern Johannesburg, having the Sandton CBD on the one side and the lush residential areas of Morningside Ext 40, Duxberry and Benmore on the other. This location makes it the quintessential mixed-use neighbourhood, recently described as a power node. Morningside proper straddles both sides of Rivonia Road, providing access to many major routes. The suburb was established on a portion of the previous Zandfontein Farm in the 1950's. and has become one of the most affluent residential and commercial suburbs in Africa. Convenience and lifestyle are two of the suburbs' most popular features. Apart from central location and proximity to the Sandton CBD, it also provides easy...



Vivienne Mileman
Property Practitioner

☎ 0824676902

✉ viv@hamiltons.co.za



Alexandra Mileman
Candidate Property
Practitioner

☎ 0837789902

✉ ali@hamiltons.co.za