






An expansive home with endless options -  5  5.5  5
in a secure Estate of 5 properties

Centred within a secure estate of 5 homes, close to the Bryanston Country Club & St Stithians, on 3319sqm of mature, irrigated, treed surrounds, this modernised traditional family home, approx. 1120sqm under roof, offers ample and secure accommodation. Welcoming entrance leading to 3 vast open-plan receptions with combustion fireplace and aluminium, double glazed stacking doors opening to landscaped garden with koi pond. Entertainer's patio under established oak tree overlooking rolling lawns and swimming pool. Well-appointed kitchen with Caesar-stone counter tops, large central island, breakfast bar, integrated appliances and separate utility (2nd) kitchen with scullery and pantry. Billiard room with bar. 5 Bedrooms (4 en-suite) incl. indulgent main en-suite with gas fireplace and study and downstairs guest suite. Automated garaging for 5 vehicles (tandem) with workshop and storeroom. Large motor court. Dual staff accommodation. PLUS Adjoining luxury apartment comprising sep....

Features

Interior

Bedrooms	5	Bathrooms	5.5
Kitchens	2	Recep. Rooms	4
Studies	1		

Sizes

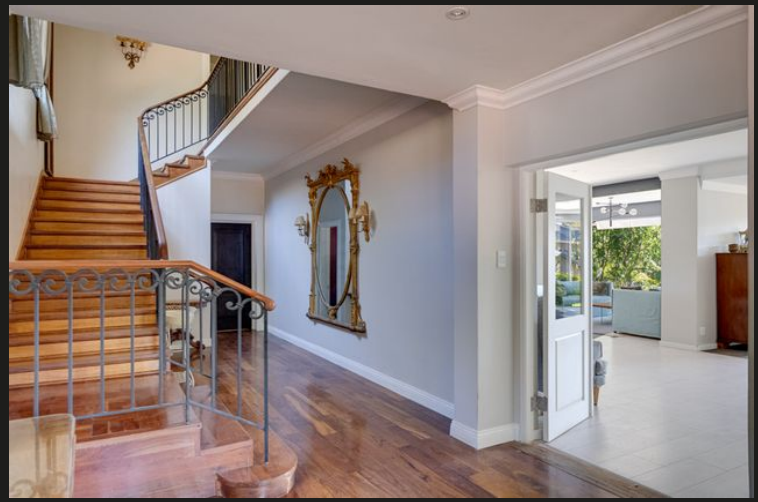
Internal	1150m ²
External	3319m ²

Exterior

Garages	5	Domestic Accom.	2
Security	Yes	Pool	Yes
Views	True		

Financial

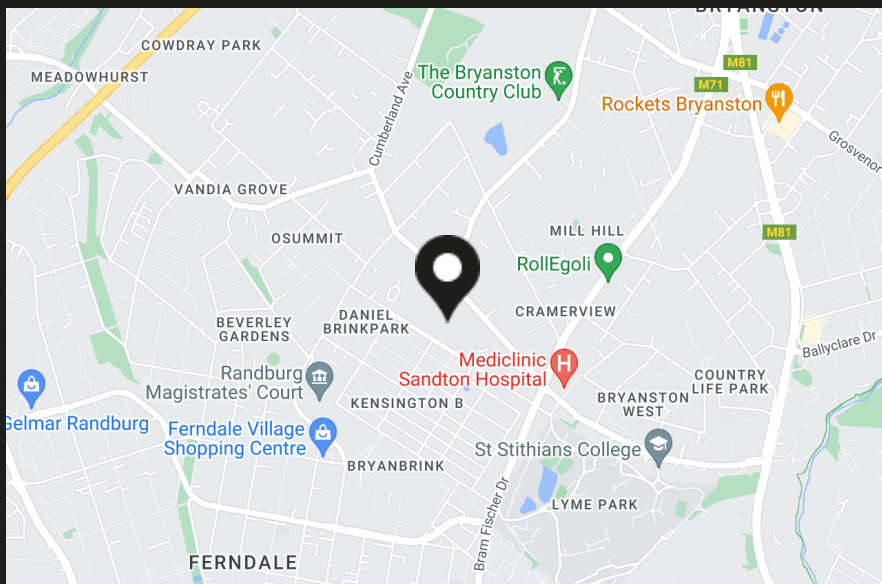
Rates	7000.00
Levies	1000.00



Bryanston at a glance

Bryanston: A Prestigious Suburb Blending Luxury, Convenience & Lifestyle Aerial view of Bryanston from Hamilton's Property Portfolio house Image source: <https://tinyurl.com/5ebbesfe>

Bryanston is a prestigious suburb that combines refined living with everyday convenience. It's proliferation of trees contribute to Johannesburg's accolade of being recognised as the biggest urban forest in the world. Close to Sandton and areas like Sandhurst and Fourways, it offers a unique mix of elegant homes, robust community infrastructure and excellent amenities - all of which appeal to homeowners, families and investors alike. Its strategic location, proximity to top schools, reliable healthcare facilities and efficient transport links further...



Christie Ford
Property Practitioner



0826764699



christie@hamiltons.co.za



Pauline Cribb
Property Practitioner



0825736322



pauline@hamiltons.co.za