



Mountain, lagoon and sea views in this world renowned golf estate

 4  4  2

This stunning property is located in the prestigious Pezula secured championship golf estate, known for its commitment to preserving the natural habitat within its 880 hectares nature conservancy. With breathtaking views of the Outeniqua Mountains, Knysna Lagoon, Atlantic Ocean, and the picturesque Knysna town, this is a prime investment opportunity. The estate boasts a world-class golf course and a superb clubhouse as its main attraction. Additionally, residents have access to the luxurious five-star Pezula Hotel, featuring a premier restaurant, wellness spa, gym, and indoor and outdoor heated pools, all offering stunning views of the Knysna lagoon and town. This 347m<sup>2</sup> home, with an additional 62m<sup>2</sup> patio and deck, features four bedrooms and is perfectly situated for easy access to the golf course and other unique features of the estate. Within walking distance from the house, residents can enjoy the communal swimming pool, gym, tennis court, children's play area, and the start of...

## Features

### Interior

Bedrooms 4  
Kitchens 1  
Studies 1

Bathrooms 4  
Recep. Rooms 2

### Exterior

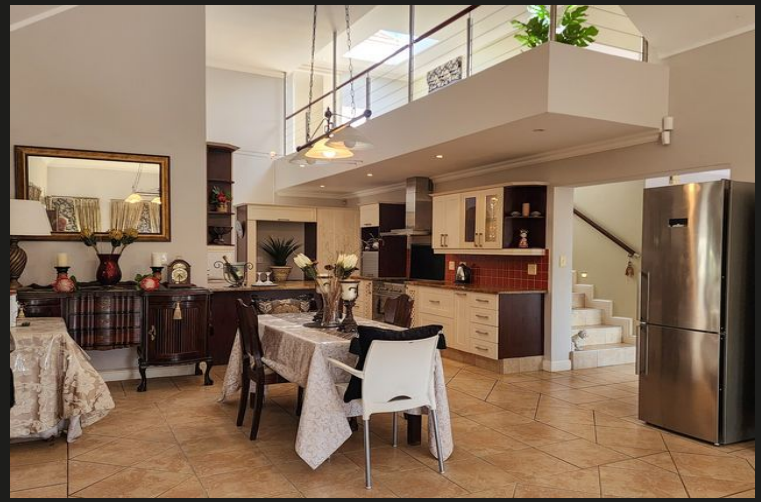
Garages 2  
Pool No  
Security Views No

### Sizes

Internal 347m<sup>2</sup>  
External 976m<sup>2</sup>

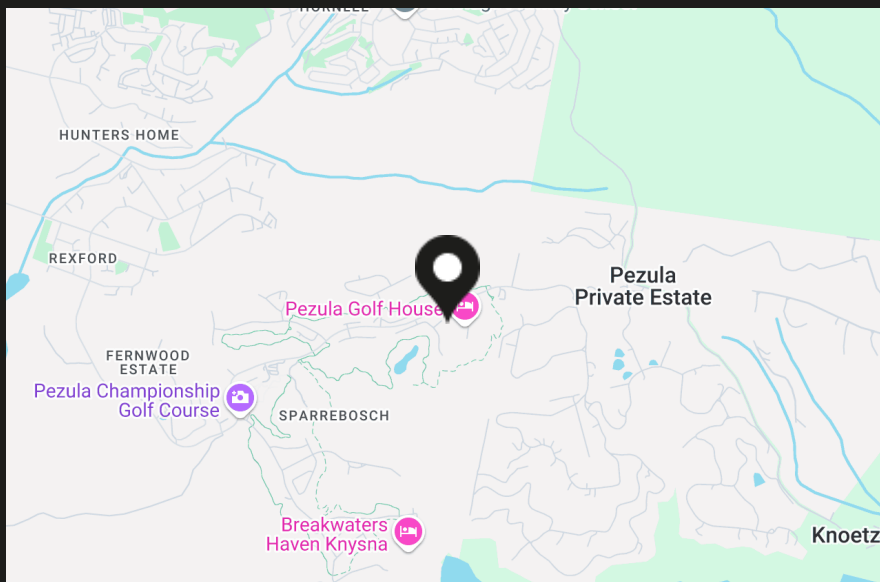
### Financial

Rates 3472.00  
Levies 3650.00



## Pezula Golf Estate at a glance

Knysna is considered the "Pearl" of the Garden Route. It is made up of various suburbs which stretch around our famous lagoon from the Western Heads to the Eastern Heads. Offering activities for all age groups, from hiking, cycling, fishing, boating, walking, bowling, tennis, to the refinement of gentle activity in a lifestyle retirement village. Knysna is a short 60 kms from the George Airport - or the even-closer Plettenberg Bay airport - for those wishing to commute by air. Brenton on Sea hugs the coastline with access to the Brenton beach. There are freehold homes as well as several apartment blocks. While the Brenton on Sea Hotel offers a delightful spot to have meals or an evening drink. Brenton on Lake borders the lagoon with direct access to the water...



**Simon Harris**  
Property Practitioner



0823380747



simon@hamiltons.co.za